



# Sajnia Sourcing BD

(100% Export Oriented Garments Buying House)

## Ladies Sweater Presentation



FRONT



BACK



CLOSE UP



Style SH- 199 12GG

Yarn - 80% Viscose 20% Nylon 2/30

Weight 320 grams.

FOB: USD 6.30/Pc

MOQ: 3,000 pcs, Size Range: XS-3XL



FRONT



CLOSE UP



SLEEVE CLOSE UP



Style 8678- 5 GG

Yarn - 75% Viscose 15% Nylon 10% Wool

Weight 265 grams

FOB: USD 6.70/Pc

MOQ: 3,000 pcs, Size Range: XS-3XL



FRONT



BACK



CLOSE UP



Style CM 01- 12 GG

Yarn - 80% Viscose 20% Nylon 2/30

Weight 170 grams

FOB: USD 6.50/Pc

MOQ: 3,000 pcs, Size Range: XS-3XL



FRONT



BACK



CLOSE UP



Style 900045- 5GG  
Yarn - 100% Acrylic 2/32  
Weight 609 grams  
FOB: USD 6.90/Pc  
MOQ: 3,000 pcs, Size Range: XS-3XL



FRONT

BACK

CLOSE UP



Style TA 210-

Yarn - 90% Acrylic 10% Nylon - 5 GG

FOB: USD 6.10/Pc

MOQ: 3,000 pcs, Size Range: XS-3XL



FRONT

BACK

CLOSE UP



Style UN 208- 7GG 3 Ply.

Yarn - 100% Acrylic Cashmere Like

Weight 315 grams.

FOB: USD 6.70/Pc

MOQ: 3,000 pcs, Size Range: XS-3XL

FRONT



BACK



CLOSE UP



Style CM 02- 12 GG

Yarn - 70% Viscose 30% Nylon 2/30

Weight 320 grams

FOB: USD 6.20/Pc

MOQ: 3,000 pcs, Size Range: XS-3XL



FRONT



BACK



CLOSE UP



Style 4071028- 5GG

Yarn - 100% Polyester Chenille

Weight 360 grams

FOB: USD 6.45/Pc

MOQ: 3,000 pcs, Size Range: XS-3XL



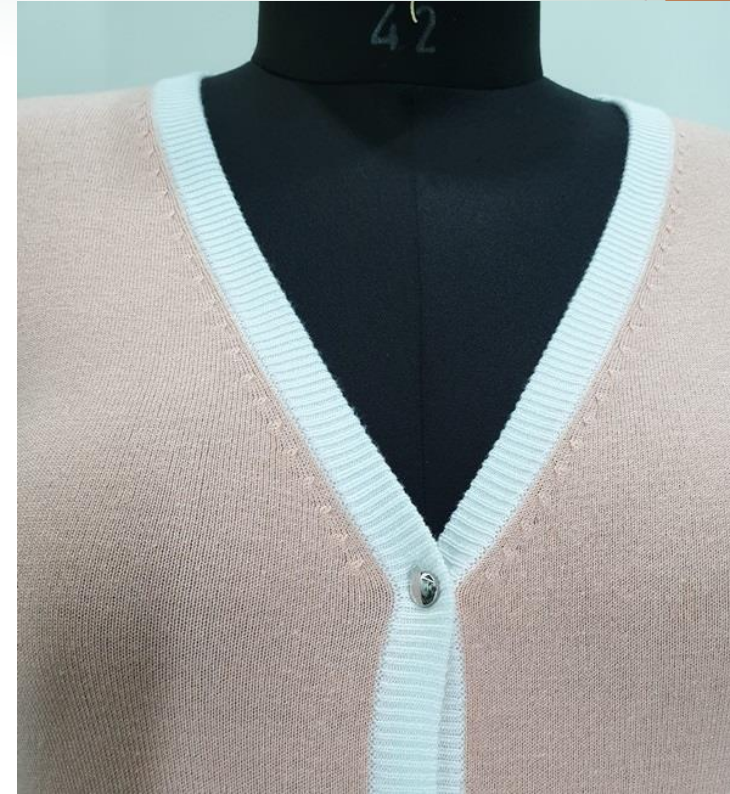
FRONT



BACK



CLOSE UP



Style CH- 131

Material - 80% Viscose 20% Nylon 2/30

Weight 285 grams

FOB: USD 6.25/Pc

MOQ: 3,000 pcs, Size Range: XS-3XL



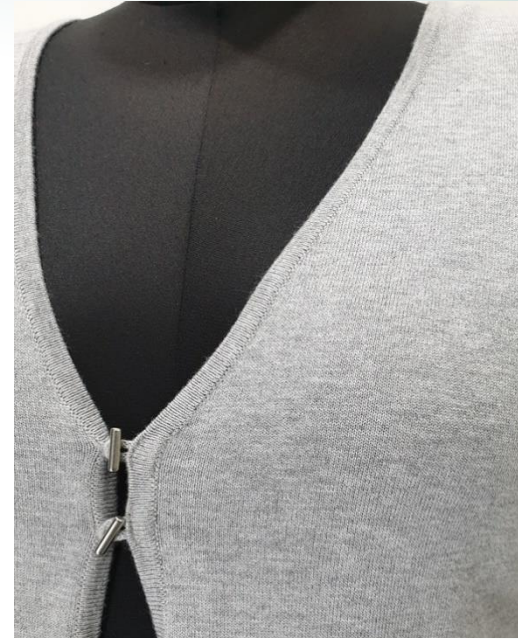
FRONT



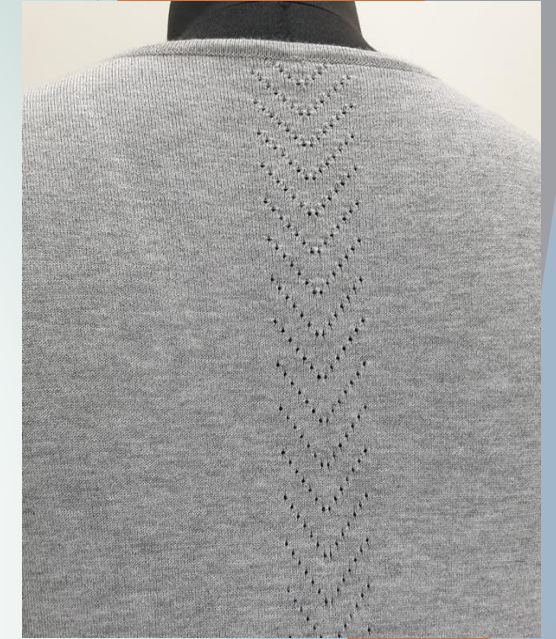
BACK



CLOSE UP



CLOSE UP



Style SH 101- 12GG

Yarn - 70% Viscose 30% Nylon 2/30

Weight 250 grams

FOB: USD 6.15/Pc

MOQ: 3,000 pcs, Size Range: XS-3XL



FRONT



BACK



CLOSE UP



Style SH 100- 12 GG

Yarn - 70% Viscose 30% Nylon

Weight 318 grams.

FOB: USD 5.95/Pc

MOQ: 3,000 pcs, Size Range: XS-3XL



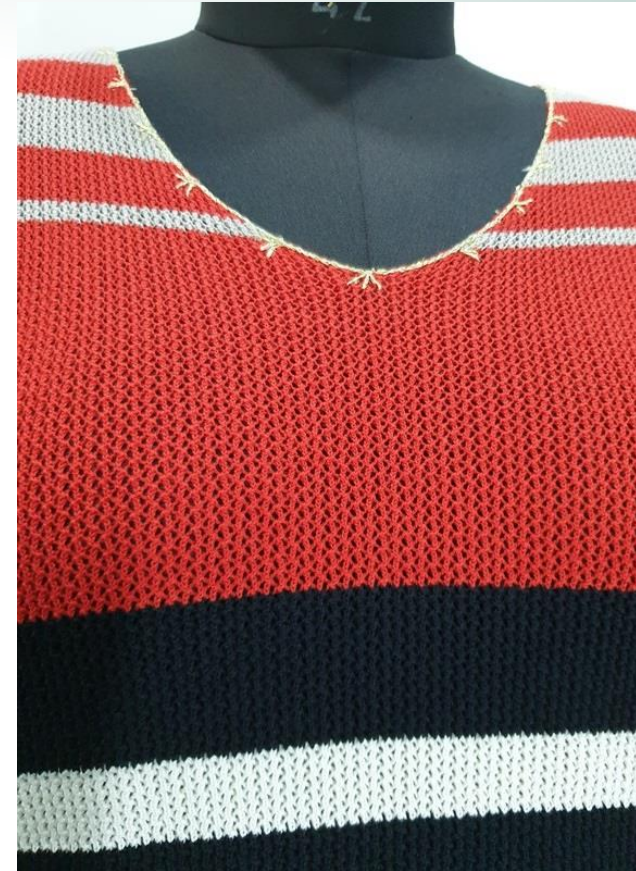
FRONT



BACK



CLOSE UP



Style CM 0247- 12 GG

Yarn - 80% Viscose 20% Nylon 2/30

Weight 170 grams

FOB: USD 11.50/Pc

MOQ: 3,000 pcs, Size Range: XS-3XL



FRONT



BACK



CLOSE UP



Style 714243- 12 GG

Yarn - 100% cotton 2/32

Weight 330 grams.

FOB: USD 9.10/Pc

MOQ: 3,000 pcs, Size Range: XS-3XL



FRONT



BACK



CLOSE UP



Style SWD 821- 3GG

Yarn - 72% Acrylic 25% Polyester 3% Elastane

Weight 290 grams

FOB: \$ 8.10/Pc

MOQ: 3,000 pcs, Size Range: XS-3XL



FRONT



BACK



CLOSE UP



Style CM 03- 12GG

Yarn - 100% Acrylic Smiling

Weight 203 grams.

FOB: USD 6.70/Pc

MOQ: 3,000 pcs, Size Range: XS-3XL



FRONT



BACK



CLOSE UP



Style CM 04- 5GG

Yarn - 100% Acrylic 2/32

Weight 538 grams

FOB: USD 7.30/Pc

MOQ: 3,000 pcs, Size Range: XS-3XL



# Thanks for Watching...!



## Sajnia Sourcing BD

(100% Export Oriented Garments Buying House)

**Corporate Office:**

Nakhastra (2nd Floor), House: 1-A/2,  
Block C, Avenue 3, Mirpur-2, Dhaka-1216, Bangladesh

☎ +88-01842335222

E-mail: [shuvo@sajniabd.com](mailto:shuvo@sajniabd.com); [info@sajniabd.com](mailto:info@sajniabd.com)

[www.sajniabd.com](http://www.sajniabd.com)

